



<u>FLAG</u>	HONGKONG	<u>PORT OF REGISTRY</u>	HONGKONG
		<u>IMO No</u>	9272230
<u>MASTER/CREW</u>	CHINESE	<u>INMARSAT "C" No</u>	447704081
<u>CALL SIGN</u>	VRZM4		
<u>BUILT</u>	Jan.2004, Shanghai Shipyard	<u>OPERATED SINCE</u>	5 Feb. 2004
<u>TONNAGE</u>		<u>GROSS</u>	<u>NET</u>
	International	24167	10714
	Suez Canal	24002	20515
	Panama Cana		21181
<u>CLASS</u>	GL+100 A5 E, G, IW, NAV-0, SOLAS - 2 Reg.54 + MC E AUT		

TYPE Multipurpose cargo ship. Adapted for carriage of containers.
Strengthened for carriage of heavy cargoes. Holds No 2 and 4 may be empty.

MAIN ENGINE

Type	kW ~ BHP	at rpm	Fuel
SULZER 7RT - FLEX60C	16250 - 22109	108	IFO 380

<u>SPEED</u>	<u>FUEL CON-SUMPTION</u>
knots	t/day

13,4	23,4
13,8	25,2
14,5	29,1
15,1	33,3
15,8	38,0
16,5	43,0
16,8	45,7
17,1	48,5
17,8	54,5
18,5	60,9

AUXILARY ENGINES Diesel Generator sets

Type	kW	rpm	kVA	AC V	Hz	Fuel
3 x WARTSILA 6L20	1020	900				IFO 380
GENERATOR ABB AMG 450L8			1020	450	60	
1 x EMERGENCY: DAMP D2866TE			212,5	450	60	

BOILERS

Type	kg/h	bar	Fuel
Oil-fired AALBORG MISSION OS1600	1500	7	IFO 380
EXHAUST-GAS AALBORG AV-4	1100	7	

Aux.Eng	2,8
<u>PORT</u>	4,3
Aux.Eng Boiler	

VENTILATION of cargo compartments

Natural supply, mechanical exhaust: 6 air changes per hour.

FRESH WATER EVAPORATOR

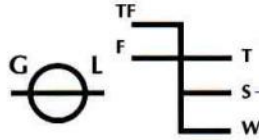
20 m³ / 24 h

TANK CAPACITY

	m ³	Capacity %	SG T/m ³	t
Fuel Oil + dual purpose tanks	2741,83	98	0,960	2632,2
Diesel Oil	175,4	98	0,860	150,8
Lubricating Oil	142,6	98	0,900	128,3
Fresh Water	275,5	100	1,000	275,5
Ballast Water + dual purpose tanks	11886,1	100	1,025	12183,2
Miscellaneous Tanks	164,65	98	1,025	168,8



FREEBOARD MARK & DEADWEIGHT SCALE



Deadweight Scale						
Draft (m)	Freeboard from Deck Line (m)	M.T.C (t-m)	T.P.C (t)	Displacement (t)	Deadweight (t)	Draft (m)
		720				
		710		47000	34000	
11,5	4,0	700		46000	33000	11,5
		690	49,0	45000	32000	
		680		44000	31000	
11,0	4,5	670		43000	30000	11,0
		660		42000	29000	
		650	48,0	41000	28000	
10,5	5,0	640		40000	27000	10,5
		630		39000	26000	
		620		38000	25000	
10,0	5,5	610	47,0	37000	24000	10,0
		600		36000	23000	
		590		35000	22000	
		580		34000	21000	
9,5	6,0	570	46,0	33000	20000	9,5
		560		32000	19000	
		550		31000	18000	
		540		30000	17000	
9,0	6,5	530	45,0	29000	16000	9,0
		520		28000	15000	
		510		27000	14000	
8,5	7,0	500		26000	13000	8,5
		490	44,0	25000	12000	
8,0	7,5	480		24000	11000	8,0
		470		23000	10000	
7,5	8,0	460	43,0	22000	9000	7,57
		450		21000	8000	
Fresh Water (F)		440	42,0	20000	7000	
		430		19000	6000	
7,0	8,5	420		18000	5000	7,0
		410	41,0	17000	4000	
SUMMER S.W. (S)		400		16000	3000	
		390		15000	2000	
6,5	9,0	380		14000	1000	6,5
		370		13000	0	
6,0	9,5	360	40,0	12000		6,0
		350		11000		
5,5	10,0					5,5
5,0	10,5					5,0
4,5	11,0					4,5
4,0	11,5					4,0
3,5	12,0					3,5

DEADWEIGHT DRAFT
(T) (m)

Fresh Water (F) **30270** **11,23**

SUMMER S.W. (S) **30435** **11,00**

Constant stores: 300

Light ship 13084 t

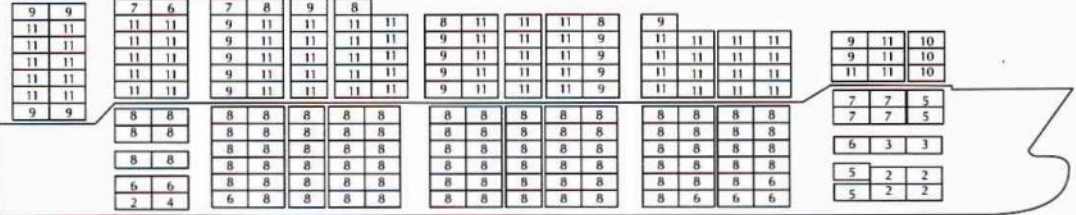


CONTAINER CAPACITY

5	4	3	2	1	HATCH No
41 39 40	37 35 36	33 31 29 27 25 32 - 26	23 21 19 17 15 22 - 16	13 11 09 07 12 08	05 03 01 04 -
					TEU FEU+(TEU) BAY No

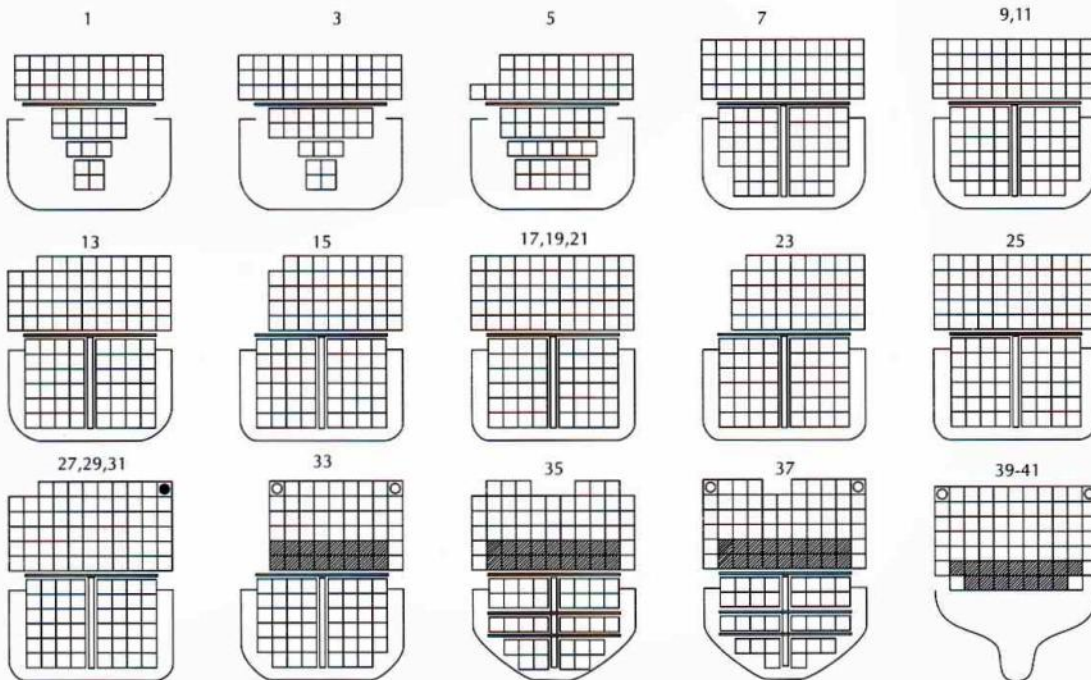
TIER No	TOTAL IN TIER TEU FEU+(TEU)	
---------	--------------------------------	--

94	18	11+(0)
92	67	28+(9)
90	155	58+(26)
88	192	82+(26)
86	222	91+(38)
84	222	91+(38)
82	220	91+(36)
12	147	61+(25)
10	147	61+(25)
8	140	59+(22)
6	133	56+(21)
4	125	50+(27)
2	104	42+(18)



GRAND TOTAL TEU FEU+(TEU)	
------------------------------	--

DECK	1096 452+(173)	73 73 75	62 61 63	52 63 64 63 55 54+(10) (64) 55	44 55 55 55 44 44+(10) 55 44	53 44 44 44 44 44	29 33 30 29+(4) (30)	TEU FEU+(TEU) DECK
HOLDS	796 329+(138)		32 34 32+(2)	46 48 48 48 48 46+(2) (48) 48	48 48 48 48 48 48 (48) 48	48 46 46 44 46+(2) 44+(2)	30 21 17 (30) 17+(4)	TEU FEU+(TEU) HOLDS
DECK & HOLDS	1892 781+(311)	73 73 75	94 95 95+(2)	98 111 112 111 103 100+(14) (112) 103	92 103 103 103 92 92+(10) (103) 92	101 90 90 88 90+(2) 88+(2)	59 54 47 46+(34) 34	TEU FEU+(TEU) TOTAL IN BAY



- ☐ - 40' only
- - bay 27, 31: 40' only

■ Refrigerated TEU

MAX. PERMISSIBLE LOADING

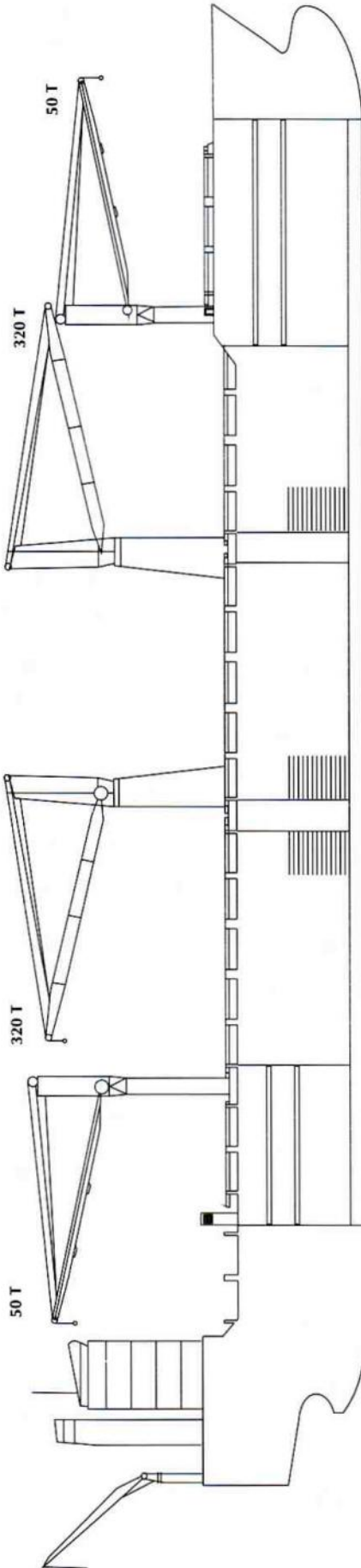
Uniform Distrib. T/m²
Hatch covers | Deck

T/per Stack of
TEU | FEU

Fork lift
T/Axle

Upper Deck	2,5	90	110	-
Weather deck hatch covers	2,5	70/50*	85/65*	-
Tweendeck hatch covers	4	35	45	8
Double Bottom Tank Top	18	144	180	8

* HC No 1



PRINCIPAL DIMENSIONS

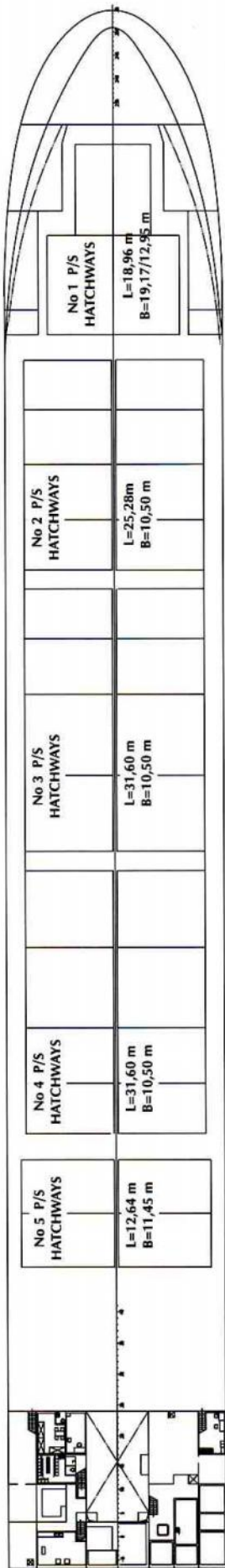
LENGTH overall - bitw perpendicular	199,8 189,0	DEPTH moulded	15,5	HEIGHT maximal	50,9
BREADTH moulded	27,8				

HATCH No	1	2	3	4	5
----------	---	---	---	---	---

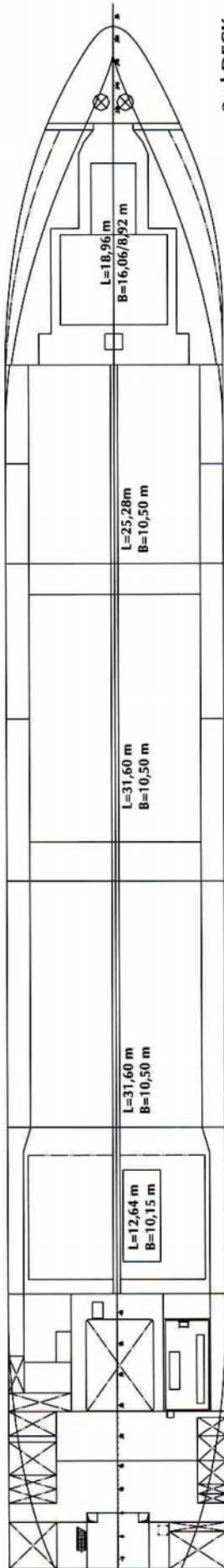
DIMENSIONS (m)	L	B	H	L	B	H	L	B	H	L	B	H
Upper Tweendeck A*	26,8	12,9-19,1	5,8**	25,2	10,5	3,9-6,5	31,6	10,5	3,9-6,5	31,6	10,5	3,9-6,5
Lower Tweendeck B*	27,5	8,9-16,1	3,1	25,2	10,5	2,0-4,6	31,6	10,5	2,0-4,6	31,6	10,5	2,0-4,6
Lower Hold	31,3	5,1-13,4	5,4	25,2	10,5	3,5-6,1	31,6	10,5	3,5-6,1	31,6	10,5	3,5-6,1

*) Breadths in holds 2. - 5 divided by longitudinal bulkhead into two (P&S) compartments.
**) Max heights in Upper Tweendecks within Hatchcoamings.

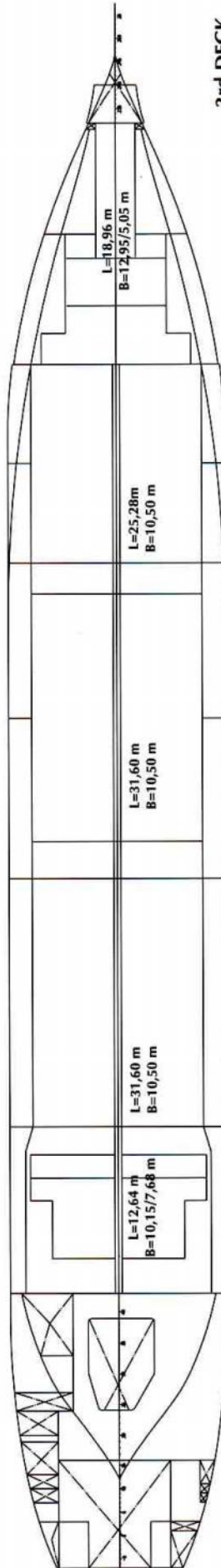
BALE CAPACITY	m ³	cu.ft	m ³	cu.ft	m ³	cu.ft	m ³	cu.ft	m ³	cu.ft		
Upper Tweendeck A	2 638	93 160	2x1632	115 266	2x2 040	144 084	2x2 040	144 084	1 174(P)+1 181(S)	83 166	16 417	579 760
Lower Tweendeck B	1 147	40 506	2x1229	86 804	2x1 536	108 486	2x1 536	108 486	832(P)+838(S)	58 976	11 419	403 258
Lower Hold	1 595	56 327	2x888	62 718	2x1 298	91 676	2x1 253	88 498	803(P)+805(S)	56 786	10 081	356 005
Total	5 380	189 993	7 498	264 788	9 748	344 246	9 658	341 068	5 633	198 928	37 917	1 339 023



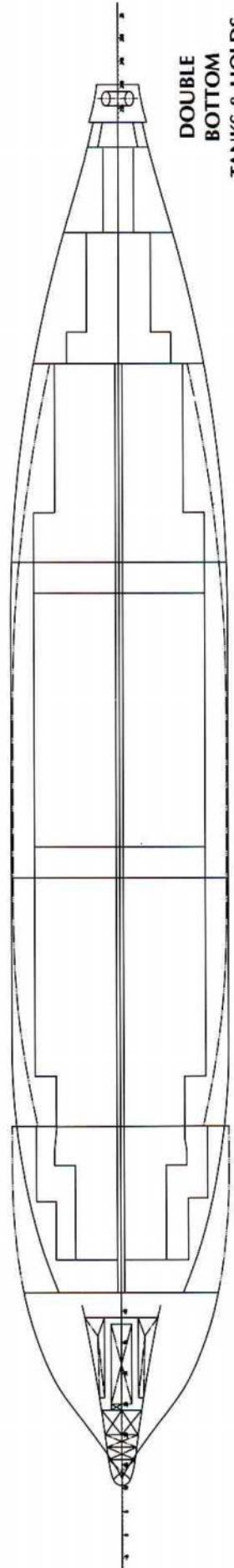
UPPER DECK



2nd DECK



3rd DECK



DOUBLE
BOTTOM
TANKS & HOLDS



CONTENTS

INFORMATION	PAGE
NAME OF VESSEL / Previous names (if any)	1
FLAG	1
MASTER/CREW	1
PORT OF REGISTRY	1
CALL SIGN	1
INMARSAT C	1
BUILDERS (SHIPYARD)	1
YEAR (Date), SINCE OPERATED BY CHIPOLBROK	1
TONNAGE (International, Suez, Panama)	1
CLASSIFICATION SOCIETY	1
- Class/ Type of Vessel	1
MAIN ENGINE	2
- Fuel grade	2
SPEED	2
FUEL CONSUMPTION (at sea, in port)	2
AUXILIARY ENGINES (Generator sets)	2
BOILERS	2
VENTILATION	2
FRESH WATER EVAPORATOR	2
REFRIGERATING PLANT (if any)	2
TANK CAPACITIES	2
LOADING SCALE	3
- Deadweight	3
- Draft	3
- Immersion	3
- Loading Marks	3
- Constants stores	3
- Light Ship Weight	3
CONTAINER CAPACITY / Graphic for TEU//FEU disposition	4
MAX. PERMISSIBLE LOADING (Decks/ Hatch Covers)	4
VESSEL'S HORIZONTAL PROJECTION	5
- Cargo Compartments and Gears	5
PRINCIPAL DIMENSIONS OF THE VESSEL	5
CARGO COMPARTMENTS	5
- Dimensions	5
- Capacity (grain/ bale)	5
VESSEL'S DECKS VERTICAL PROJECTION	6
- Dimensions of Hatchways	6