



<u>FLAG</u>	Maltese	<u>PORT OF REGISTRY</u>	LIMASSOL
		<u>IMO No</u>	9272228
<u>MASTER/CREW</u>	POLISH	<u>INMARSAT "C" No</u>	420948610
<u>CALL SIGN</u>	P3XQ9		
<u>BUILT</u>	Dec.2004, Shanghai Shipyard	<u>OPERATED SINCE</u>	8 Dec. 2004
<u>TONNAGE</u>		<u>GROSS</u>	<u>NET</u>
	International	24167	10714
	Suez Canal	24002	20515
	Panama Cana		21181
<u>CLASS</u>	GL+100 A5 E, G, IW, NAV-0, SOLAS - 2 Reg.54 + MC E AUT		
<u>TYPE</u>	Multipurpose cargo ship. Adapted for carriage of containers. Strengthened for carriage of heavy cargoes. Holds No 2 and 4 may be empty.		

MAIN ENGINE

Type	kW ~ BHP	at rpm	Fuel
SULZER 7RT - FLEX60C	16250 - 22109	108	IFO 380

<u>SPEED</u>	<u>FUEL CON-SUMPTION</u>
knots	t/day

13,4	23,4
13,8	25,2
14,5	29,1
15,1	33,3
15,8	38,0
16,5	43,0
16,8	45,7
17,1	48,5
17,8	54,5
18,5	60,9

AUXILIARY ENGINES Diesel Generator sets

Type	kW	rpm	kVA	AC V	Hz	Fuel
3 x WARTSILA 6L20	1020	900				IFO 380
GENERATOR ABB AMG 450L8			1020	450	60	
1 x EMERGENCY: DAMP D2866TE			212,5	450	60	

BOILERS

Type	kg/h	bar	Fuel
Oil-fired AALBORG MISSION OS1600	1500	7	IFO 380
EXHAUST-GAS AALBORG AV-4	1100	7	

Aux.Eng	2,8
---------	------------

<u>PORT</u>	4,3
Aux.Eng Boiler	

VENTILATION of cargo compartments

Natural supply, mechanical exhaust: 6 air changes per hour.

FRESH WATER EVAPORATOR

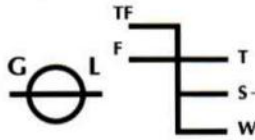
20 m³ / 24 h

TANK CAPACITY

	m ³	Capacity %	SG T/m ³	t
Fuel Oil + dual purpose tanks	2741,83	98	0,960	2632,2
Diesel Oil	175,4	98	0,860	150,8
Lubricating Oil	142,6	98	0,900	128,3
Fresh Water	275,5	100	1,000	275,5
Ballast Water + dual purpose tanks	11886,1	100	1,025	12183,2
Miscellaneous Tanks	164,65	98	1,025	168,8



FREEBOARD MARK & DEADWEIGHT SCALE



Deadweight Scale						
Draft (m)	Freeboard from Deck Line (m)	M.T.C (t-m)	T.P.C (t)	Displacement (t)	Deadweight (t)	Draft (m)
		720				
		710		47000	24000	
11,5	4,0	700		46000	23000	11,5
		690	49,0	45000	22000	
		680		44000	21000	
11,0	4,5	670		43000	20000	11,0
		660		42000	19000	
		650	48,0	41000	18000	
10,5	5,0	640		40000	17000	10,5
		630		39000	16000	
		620		38000	15000	
10,0	5,5	610	47,0	37000	14000	10,0
		600		36000	13000	
		590		35000	12000	
		580		34000	11000	
		570	46,0	33000	10000	
9,5	6,0	560		32000	9000	9,5
		550		31000	8000	
		540		30000	7000	
		530	45,0	29000	6000	
9,0	6,5	520		28000	5000	9,0
		510		27000	4000	
		500		26000	3000	
8,5	7,0	490	44,0	25000	2000	8,5
		480		24000	1000	
8,0	7,5	470		23000	0	8,0
		460	43,0	22000	0	
7,5	8,0	450		21000	0	7,57
		440	42,0	20000	0	
		430		19000	0	
		420		18000	0	
7,0	8,5	410	41,0	17000	0	7,0
		400		16000	0	
		390		15000	0	
		380		14000	0	
		370	39,0	13000	0	
6,5	9,0	360		12000	0	6,5
		350		11000	0	
		340		10000	0	
6,0	9,5	330	40,0	9000	0	6,0
		320		8000	0	
		310		7000	0	
5,5	10,0	300		6000	0	5,5
		290		5000	0	
		280		4000	0	
5,0	10,5	270		3000	0	5,0
		260		2000	0	
		250		1000	0	
4,5	11,0	240	39,0	0	0	4,5
		230		0	0	
		220		0	0	
4,0	11,5	210		0	0	4,0
		200		0	0	
		190		0	0	
3,5	12,0	180	38,0	0	0	3,5
		170		0	0	
		160		0	0	
		150		0	0	
		140		0	0	
		130		0	0	
		120		0	0	
		110		0	0	

DEADWEIGHT DRAFT
(T) (m)

Fresh Water (F) **30270** **11,23**

SUMMER S.W. (S) **30435** **11,00**

Constant stores: 300

Light ship 13084 t



CONTAINER CAPACITY

5	4	3	2	1	HATCH No
---	---	---	---	---	----------

41 39 40	37 35 36	33 31 29 27 25 32 - 26	23 21 19 17 15 22 - 16	13 11 09 07 12 08	05 03 01 04 -	TEU FEU+(TEU)	BAY No
-------------	-------------	---------------------------	---------------------------	----------------------	------------------	------------------	--------

TIER No	TOTAL IN TIER TEU	FEU+(TEU)
---------	-------------------	-----------

94	18	11+(0)
92	67	28+(9)
90	155	58+(26)
88	192	82+(26)
86	222	91+(38)
84	222	91+(38)
82	220	91+(36)

12	147	61+(25)
10	147	61+(25)
8	140	59+(22)
6	133	56+(21)
4	125	50+(27)
2	104	42+(18)



GRAND TOTAL TEU	FEU+(TEU)
-----------------	-----------

DECK	1096	
	452+(173)	

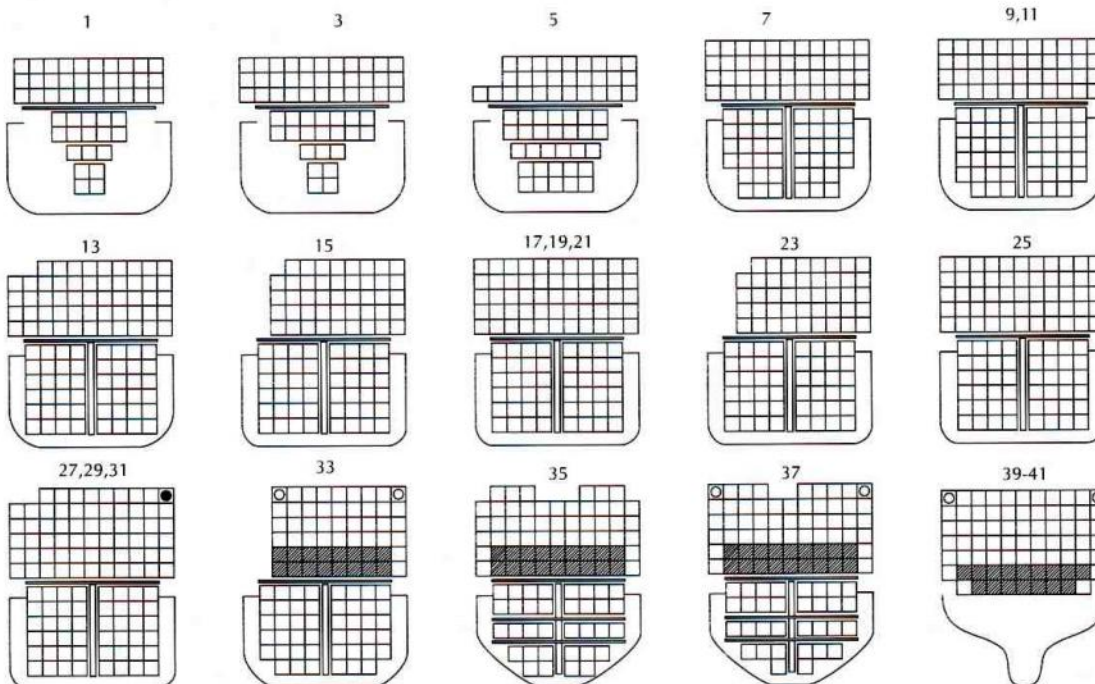
HOLDS	796	
	329+(138)	

DECK & HOLDS	1892	
	781+(311)	

73 73 75	62 61 63	52 63 64 63 55 54+(10) (64) 55	44 55 55 55 44 44+(10) 55 44	53 44 44 44 44 44	29 33 30 29+(4) (30)	TEU FEU+(TEU)	DECK
-------------	-------------	-----------------------------------	---------------------------------	----------------------	-------------------------	------------------	------

	32 34 32+(2)	46 48 48 48 48 46+(2) (48) 48	48 48 48 48 48 48 (48) 48	48 46 46 44 46+(2) 44+(2)	30 21 17 (30) 17+(4)	TEU FEU+(TEU)	HOLDS
--	-----------------	----------------------------------	------------------------------	------------------------------	-------------------------	------------------	-------

73 73 75	94 95 95+(2)	98 111 112 111 103 100+(14) (112) 103	92 103 103 103 92 92+(10) (103) 92	101 90 90 88 90+(2) 88+(2)	59 54 47 46+(34) 34	TEU FEU+(TEU)	TOTAL IN BAY
-------------	-----------------	--	---------------------------------------	-------------------------------	------------------------	------------------	--------------

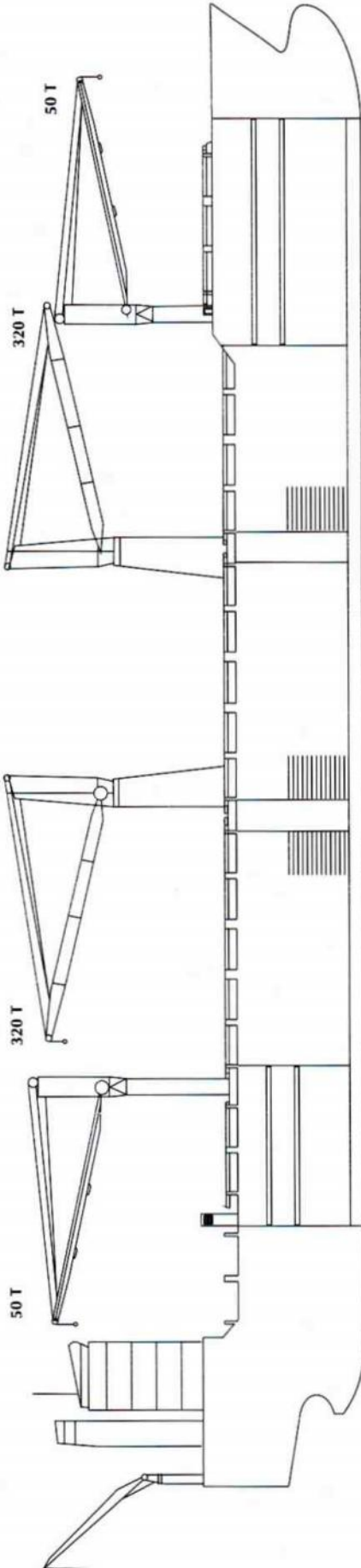


- ☐ - 40' only
- - bay 27, 31: 40' only

■ Refrigerated TEU

MAX. PERMISSIBLE LOADING

	Uniform Distrib. T / m ²		T / per Stack of		Fork lift T / Axle
	Hatch covers	Deck	TEU	FEU	
Upper Deck	2,5	90	110	-	
Weather deck hatch covers	2,5	70/50*	85/65*	-	
Tweendeck hatch covers	4	35	45	8	
Double Bottom Tank Top	18	144	180	8	



PRINCIPAL DIMENSIONS

LENGTH overall - b/w perpendicular	199,8	DEPTH moulded	15,5	HEIGHT maximal	50,9
BREADTH moulded	27,8				

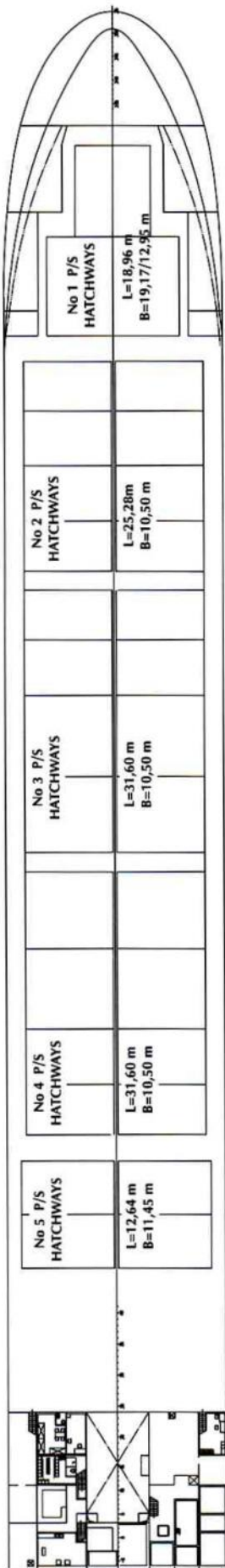
HATCH No	1	2	3	4	5
----------	---	---	---	---	---

DIMENSIONS (m)	L	B	H	L	B	H	L	B	H	L	B	H	L	B	H
Upper Tweendeck A*	26,8	12,9-19,1	5,8**	25,2	10,5	3,9-6,5	31,6	10,5	3,9-6,5	31,6	10,5	3,9-6,5	19,7	11,45	5,8**
Lower Tweendeck B*	27,5	8,9-16,1	3,1	25,2	10,5	2,0-4,6	31,6	10,5	2,0-4,6	31,6	10,5	2,0-4,6	19,7	11,45	3,5
Lower Hold	31,3	5,1-13,4	5,4	25,2	10,5	3,5-6,1	31,6	10,5	3,5-6,1	31,6	10,5	3,5-6,1	19,7	4,2-7,8	5,2

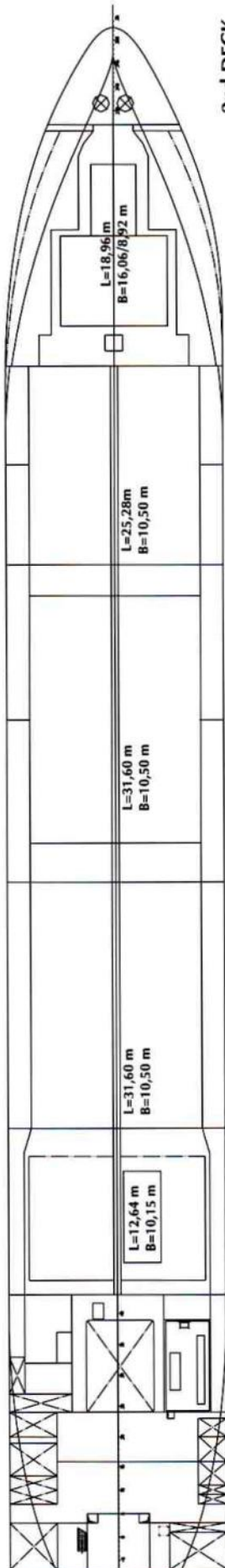
*) Breadths in holds 2 - 5 divided by longitudinal bulkhead into two (P&S) compartments.

**) Max heights in Upper Tweendecks within Hatchcoamings.

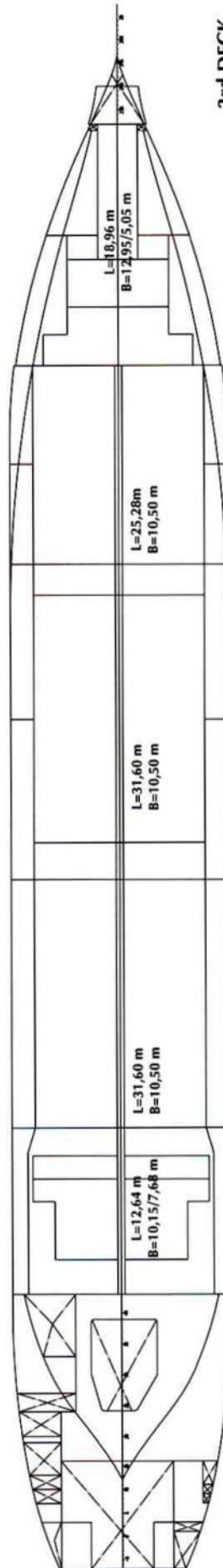
BALE CAPACITY	m ³	cub.ft	m ³	cub.ft	m ³	cub.ft	m ³	cub.ft	m ³	cub.ft	m ³	cub.ft	m ³	cub.ft	m ³	cub.ft
Upper Tweendeck A	2 638	93 160	2x1632	115 266	2x2 040	144 084	2x2 040	144 084	2x2 040	144 084	1 174(P)+1 181(S)	83 166	16 417	579 760		
Lower Tweendeck B	1 147	40 506	2x1229	86 804	2x1 536	108 486	2x1 536	108 486	2x1 536	108 486	832(P)+838(S)	58 976	11 419	403 258		
Lower Hold	1 595	56 327	2x888	62 718	2x1 298	91 676	2x1 253	88 498	2x1 253	88 498	803(P)+805(S)	56 786	10 081	356 005		
Total	5 380	189 993	7 498	264 788	9 748	344 246	9 658	341 068	9 658	341 068	5 633	198 928	37 917	1 339 023		



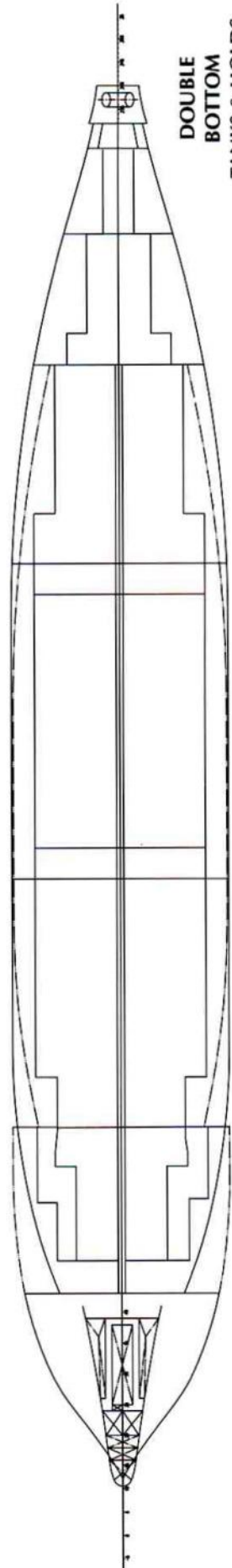
UPPER DECK



2nd DECK



3rd DECK

DOUBLE
BOTTOM
TANKS & HOLDS

CONTENTS

INFORMATION	PAGE
NAME OF VESSEL / Previous names (if any)	1
FLAG	1
MASTER/CREW	1
PORT OF REGISTRY	1
CALL SIGN	1
INMARSAT C	1
BUILDERS (SHIPYARD)	1
YEAR (Date), SINCE OPERATED BY CHIPOLBROK	1
TONNAGE (International, Suez, Panama)	1
CLASSIFICATION SOCIETY	1
- Class/ Type of Vessel	1
MAIN ENGINE	2
- Fuel grade	2
SPEED	2
FUEL CONSUMPTION (at sea, in port)	2
AUXILIARY ENGINES (Generator sets)	2
BOILERS	2
VENTILATION	2
FRESH WATER EVAPORATOR	2
REFRIGERATING PLANT (if any)	2
TANK CAPACITIES	2
LOADING SCALE	3
- Deadweight	3
- Draft	3
- Immersion	3
- Loading Marks	3
- Constants stores	3
- Light Ship Weight	3
CONTAINER CAPACITY / Graphic for TEU//FEU disposition	4
MAX. PERMISSIBLE LOADING (Decks/ Hatch Covers)	4
VESSEL'S HORIZONTAL PROJECTION	5
- Cargo Compartments and Gears	5
PRINCIPAL DIMENSIONS OF THE VESSEL	5
CARGO COMPARTMENTS	5
- Dimensions	5
- Capacity (grain/ bale)	5
VESSEL'S DECKS VERTICAL PROJECTION	6
- Dimensions of Hatchways	6