



<u>FLAG</u>	CHINESE	<u>PORT OF REGISTRY</u>	SHANGHAI
<u>MASTER/CREW</u>	CHINESE		
<u>CALL SIGN</u>	BOPJ	<u>TELEX - INMARSAT "C"</u>	441242810
<u>BUILT</u>	3. Maj Shipyard,Rijeka	<u>YARD No</u>	660
<u>COMMISSIONED</u>	1992, Sept. 30th	<u>OPERATED SINCE</u>	1992, Oct. 2nd
<u>TONNAGE</u>		<u>GROSS</u>	<u>NET</u>
	International	18 177	8 695
	Suez Canal	19 503	16 759
	Panama Canal	19 298	14 975
<u>CLASS</u>	* CSA 5/5, SHC, ECSA, LCS, ICB 3 * CSM AUTO - 0, CMS		

TYPE Multipurpose general cargo vessel.Strengthened for heavy cargoes, and adapted for carriage of containers.

MAIN ENGINE

Type	kW ~ BHP	at rpm	Fuel
<b>SULZER 5RTA 62</b>	<b>9 500 ~ 12 925</b>	<b>109</b>	<b>IF 380</b>

<u>SPEED</u>	<u>FUEL CONSUMPTION</u>
knots	t/day

13,2	20,4
13,5	21,8
13,8	23,3
14,1	24,8
14,4	26,4
14,7	28,0
15,0	29,7
15,3	31,5
15,6	33,3
15,9	35,3
16,0	36,3

AUXILIARY ENGINES (Diesel Generator sets)

Type	kW	rpm	kVA	AC V	Hz	Fuel
3 x WÄRTSILÄ 6R22/26 Generators SIEMENS SB173	810	720	880	400	60	IF 380
1 x emergency: SAAB-SCANIA DS9, Generator SIEMENS S8044	120	1 800	150	400	60	D.O.

Aux.Eng. + 3,6

BOILERS

Type	kg/h	bar	Fuel
Oil-fired SUNROD CPDB 2,0	2 000	8	IF 380
Exhaust-gas SUNROD EGE-1A	1 500	8	

PORT

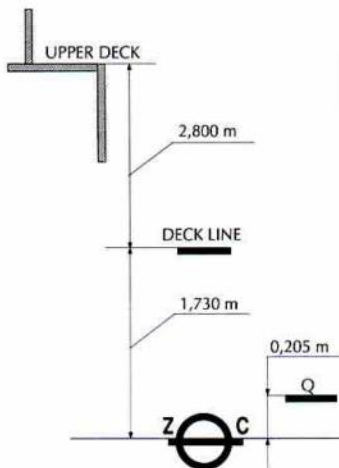
Aux.Eng.	2,0
Boiler	1,5

VENTILATION of cargo compartments

Natural supply, mechanical exhaust: 10 air changes per hour

FRESH WATER EVAPORATORNIREX JWP-26-C100: 25 m<sup>3</sup> /24 hTANK CAPACITY

	m <sup>3</sup>	Capacity %	SG T/m <sup>3</sup>	t
Fuel Oil	1 090,5	98	0,960	1 026,0
+ overflow & drain tanks	23,1	98	0,960	21,7
Diesel Oil	81,9	98	0,860	69,0
Lubricating Oil	76,6	98	0,900	67,5
+ storage & service tanks	51,7	98	0,900	45,4
Fresh Water	227,6	100	1,000	227,6
+ draining & washing tanks	7,5	100	1,000	7,5
Ballast Water	8 138,0	100	1,025	8 341,4
+ sludge & bilge water tanks	70,0	100	1,025	71,7



	<u>DEADWEIGHT</u> (T)	<u>DRAFT</u> (m)
--	--------------------------	---------------------

Fresh Water (Q)	<b>22 112</b>	<b>9,52</b>
SUMMER S.W.	<b>22 109</b>	<b>9,32</b>

Constant stores: **150**

Light ship **9 505**

**LOADING SCALE**

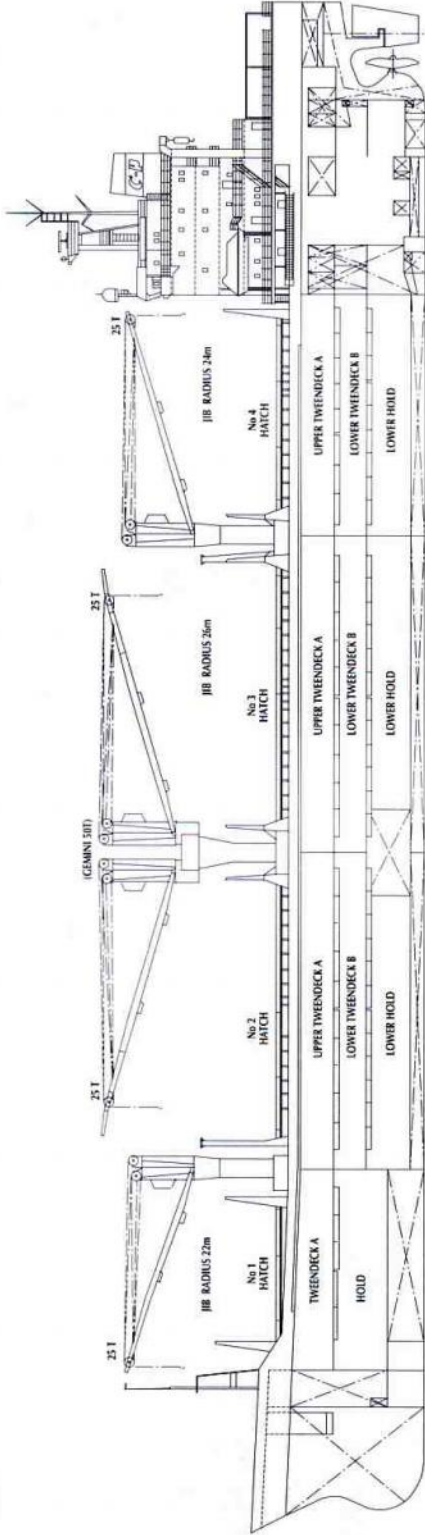
DRAFT m	IMMERSION IN SALT WATER S.G. 1.025 T/cm	DEADWEIGHT T (metric tonnes)			DRAFT m
		IN WATER OF SPECIFIC GRAVITY (T/m <sup>3</sup> ) (FRESH) 1,000 ; 1,025 (SALT)			
		27 000		28 000	
	40	26 000		27 000	
		25 000		26 000	
10		24 000		25 000	10
	39	23 000		24 000	
		22 000		23 000	
		21 000		22 000	
9	38	20 000		21 000	9
		19 000		20 000	
		18 000		19 000	
	37	17 000		18 000	
8		16 000		17 000	8
		15 000		16 000	
	36	14 000		15 000	
7		13 000		14 000	7
		12 000		13 000	
		11 000		12 000	
		10 000		11 000	
6		9 000		10 000	6
	35	8 000		9 000	
		7 000		8 000	
		6 000		7 000	
5		5 000		6 000	5
		4 000		5 000	
		3 000		4 000	
4		2 000		3 000	4
	34	1 000		2 000	
		0		1 000	
3		0		0	3
	33				


CONTAINER CAPACITY

HATCH No		1	2	3	4									
BAY No	TEU FEU	01 03 02	05 -	07 09 08	11 13 12	15 -	17 19 18	21 23 22	25 -	27 29 28	31 -	33 35 34		
													(EMPTY)	
													TIER No	TOTAL IN TIER TEU FEU+(TEU)
													86	77 70+ (37)
													84	77 70+ (37)
													82	77 70+ (37)
													10	100 46+ (8)
													08	100 46+ (8)
													06	94 42+ (10)
													04	94 42+ (10)
													02	84 38+ (8)
													GRAND TOTAL TEU FEU+(TEU)	
													DECK	531 -
														- 210+ (111)
													HOLDS	472 -
														- 214+ (44)
													DECK & HOLDS	1003 -
														- 424+ (155)
													(EMPTY)	
													DECK	24 24
														24
													HOLDS	20 24
														20+(4)
													TOTAL IN BAY	47 51
														47+(4)
														24 (24)
														70 73
														70+(3)
														73 73
														73
														24 (24)
														73 73
														73
														73 70
														70+(3)
														24 (24)
														73 67
														67+(6)
														67 (67)
														24 24
														24
													BAY 01	
													BAY 03	
													BAY 07, 23	
													BAY 09:13, 17:21, 27	
													BAY 29, 31	
													BAY 05, 15, 25	
													(EMPTY) BAY 33, 35	

**Refrigerated TEU 50**
MAX. PERMISSIBLE LOADING

	Uniform Distrib. T / m <sup>2</sup>		T / per Stack of		Fork lift T / Axle
	Hatchcovers	Deck	TEU	FEU	
Upper Deck	1,78	0,87	51,00	63,70	
Poop Deck			9,10	9,10	
2 nd Deck	4,08	4,08	49,00	61,20	8,16
3 rd Deck	2,75	2,75	24,50	30,60	8,16
Double Bottom Tank Top, Hatch No 1		11,22	118,30	122,40	8,16
Double Bottom Tank Top, Hatch No 2&4		14,28	122,40	153,00	8,16



**PRINCIPAL DIMENSIONS**

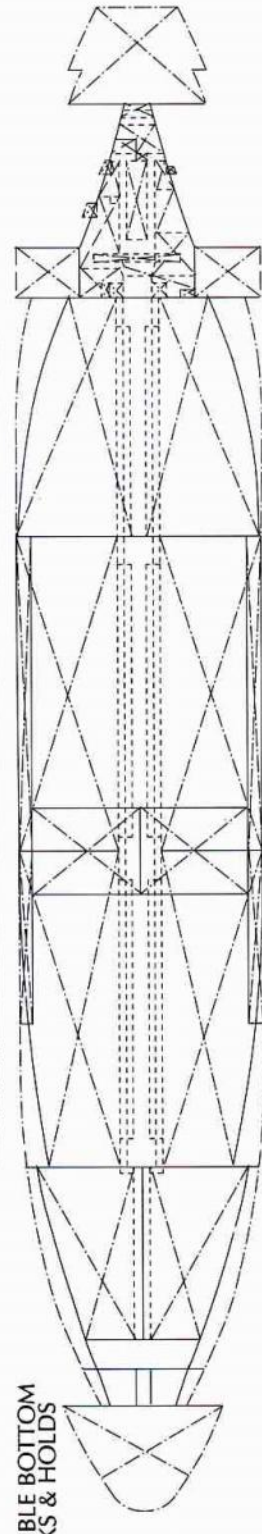
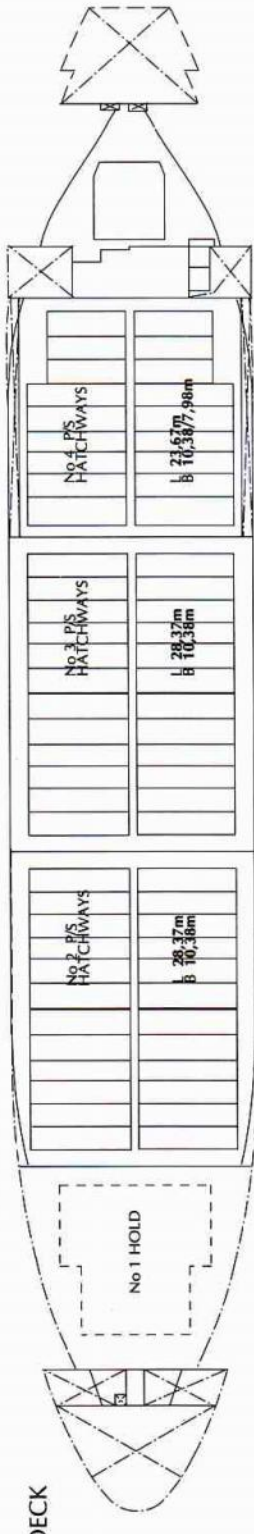
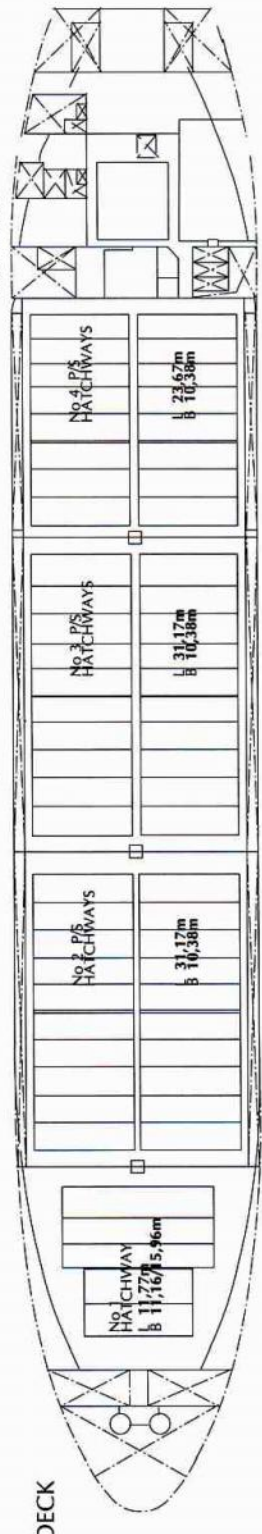
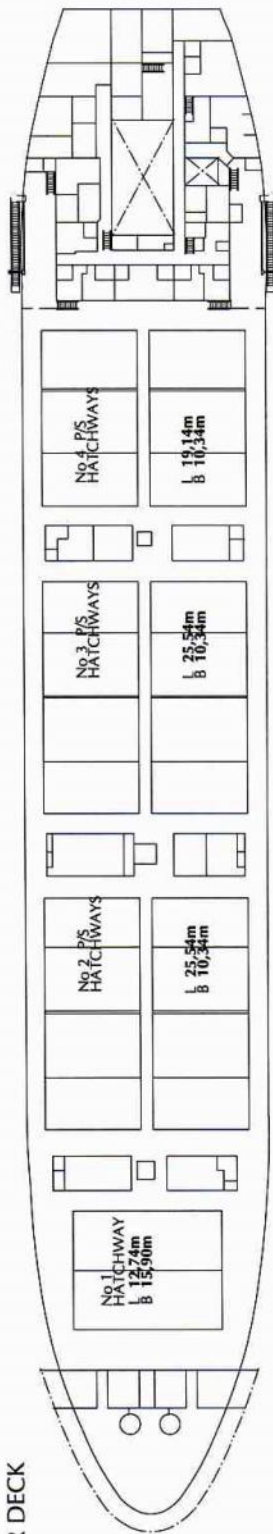
LENGTH overall - at water line - btw perpendicular BREADTH moulded	m	169,86 162,20 27,50	DEPTH moulded - to Upper Deck - to Second Deck - to Third Deck	m	13,81 10,15 6,35	HEIGHT maximal from keel plate to - top of RDF aerial - top of aerial mast	m	45,7 47,7	HEIGHT maximal from waterline to top of manoeuvring light under ballast conditions (T <sub>A</sub> = 6,516 m, T <sub>F</sub> = 4,516 m).	m	37,24
---	---	---------------------------	---	---	------------------------	---	---	--------------	--	---	-------

HATCH No	1	2	3	4
----------	---	---	---	---

DIMENSIONS (m)	L	B	H	L	B (P&S)*	H	L	B (P&S)*	H
Upper Tweendeck A	22,4	13,0x25,4	3,6	35,2	2x 12,4	3,6	26,4	2x 12,4	3,6
Lower Tweendeck B	-	-	-	35,2	2x 12,3x13,6	3,1	26,4	2x 11,9	3,1
Lower Hold	22,4	11,2x23,0	5,4	30,4	2x 11,9	4,2	26,4	2x 12,7x7,7	4,2

\*1 Hatch No 2-4 cargo compartments divided by longitudinal bulkheads.

GRAIN CAPACITY	TOTAL	
	m <sup>3</sup>	cub. ft
Upper Tweendeck A	2 406,4	84 985
Lower Tweendeck B	-	-
Lower Hold	2 623,3	92 641
Total	5 029,2	177 626
BALE CAPACITY	TOTAL	
	m <sup>3</sup>	cub. ft
Upper Tweendeck A	2 224,3	78 553
Lower Tweendeck B	-	-
Lower Hold	2 224,6	78 564
Total	4 448,9	157 117



**CONTENTS**

<b>INFORMATION</b>	<b>PAGE</b>
<b>NAME OF VESSEL</b>	1
- Previous names (if any)	1
<b>FLAG</b>	1
<b>MASTER/CREW</b>	1
<b>PORT OF REGISTRY</b>	1
- Registry No	1
<b>CALL SIGN</b>	1
<b>TELEX No</b>	1
<b>BUILDERS (SHIPYARD)</b>	1
- Yard No	1
<b>YEAR (Date) OF COMMISSION</b>	1
<b>YEAR (Date), SINCE OPERATED BY CHIPOLBROK</b>	1
<b>TONNAGE</b> (International, Suez, Panama)	1
<b>CLASSIFICATION SOCIETY</b>	1
- Class	1
- Reg. No	1
- Date of next Class Renewal	1
- Type of Vessel	1
- Additional Class Notations	1
<b>MAIN ENGINE</b>	2
- Fuel grade	2
<b>SPEED</b>	2
<b>FUEL CONSUMPTION</b> (at sea, in port)	2
<b>AUXILIARY ENGINES</b> (Generator sets)	2
<b>BOILERS</b>	2
<b>VENTILATION</b>	2
<b>FRESH WATER EVAPORATOR</b>	2
<b>REFRIGERATING PLANT</b> (if any)	2
<b>TANK CAPACITIES</b>	2
<b>LOADING SCALE</b>	3
- Deadweight	3
- Draft	3
- Immersion	3
- Loading Marks	3
- Constant stores	3
- Light Ship Weight	3
<b>CONTAINER CAPACITY</b>	4
- Graphic for TEU/FEU disposition	4
<b>MAX. PERMISSIBLE LOADING</b> (Decks/Hatch Covers)	4
<b>VESSEL'S HORIZONTAL PROJECTION</b>	5
- Cargo Compartments and Gears	5
<b>PRINCIPAL DIMENSIONS OF THE VESSEL</b>	5
<b>CARGO COMPARTMENTS</b>	5
- Dimensions	5
- Capacity (grain/bale)	5
<b>VESSEL'S DECKS VERTICAL PROJECTION</b>	6
- Dimensions of Hatchways	6